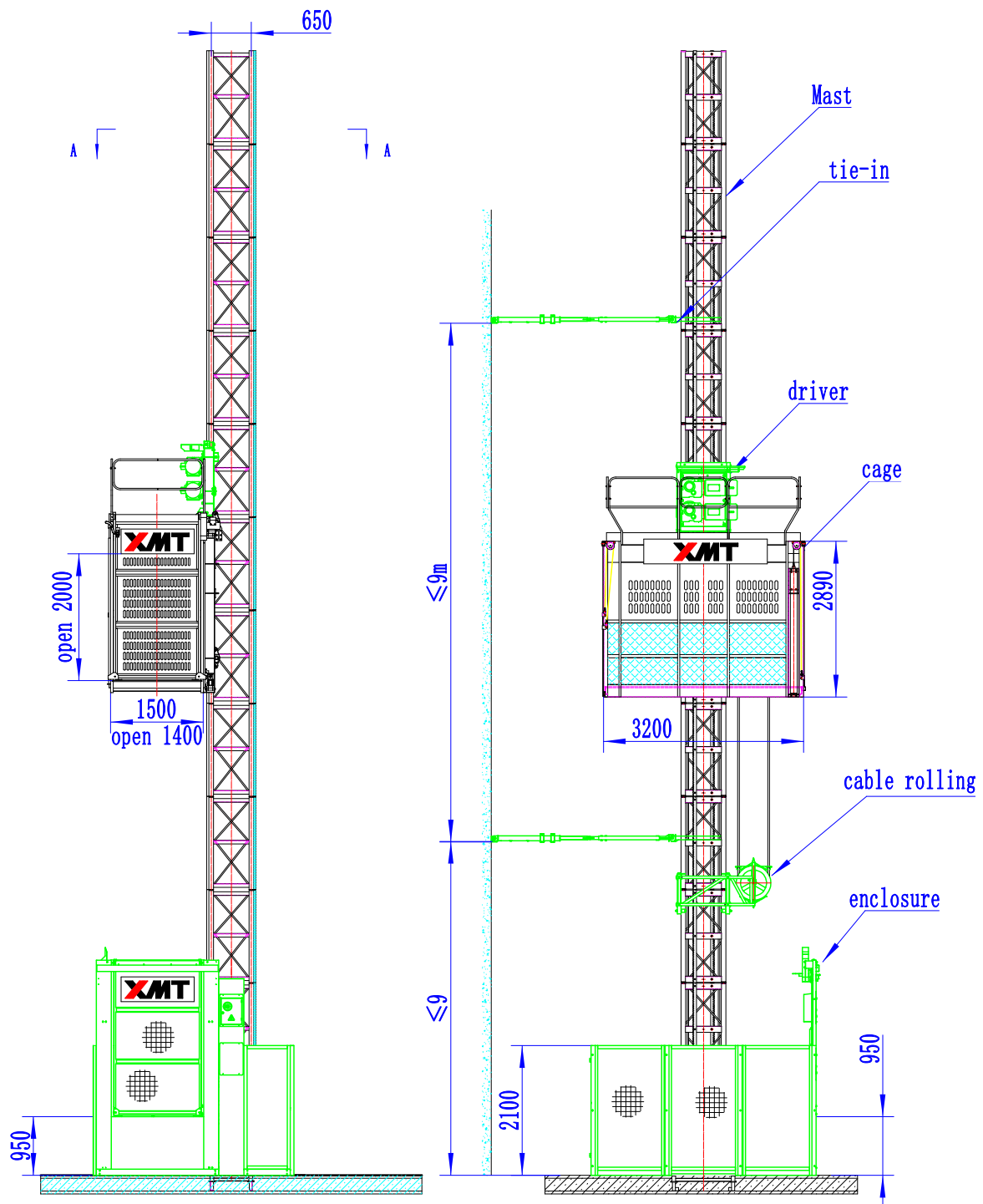


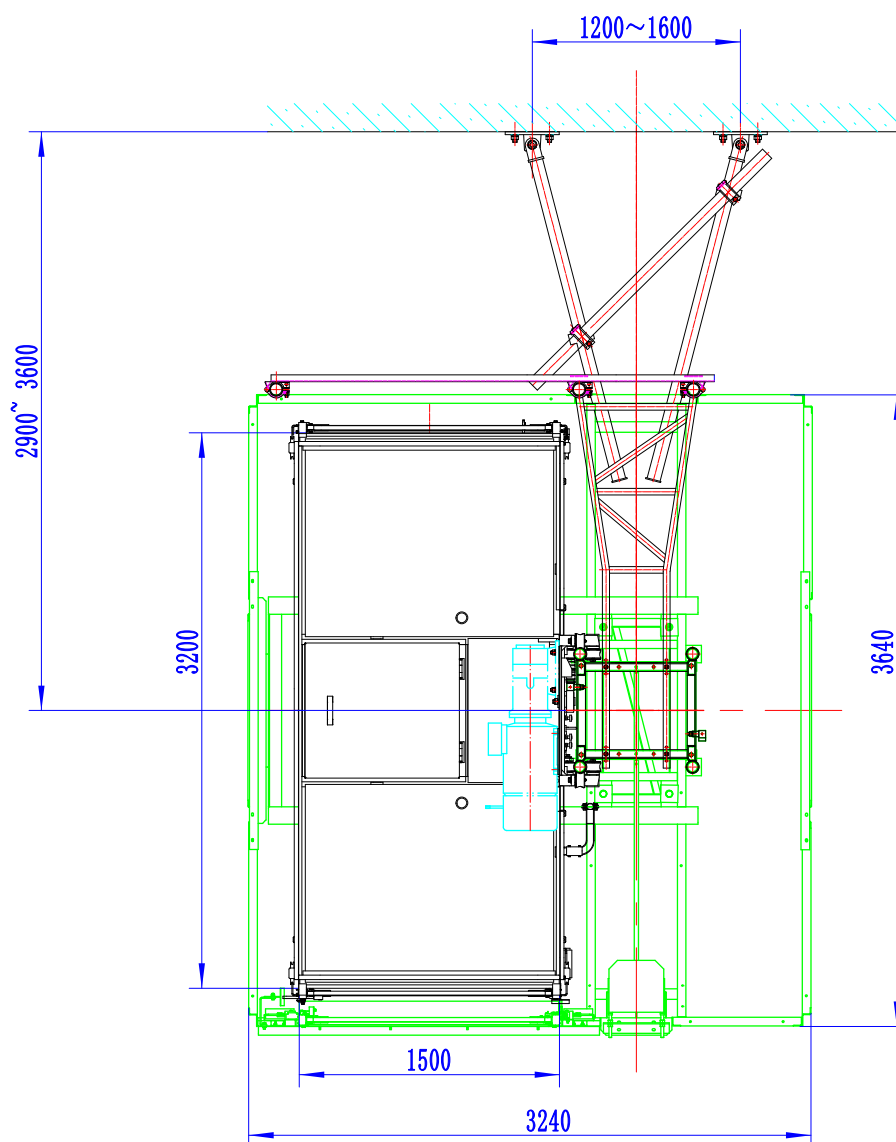
SC120TD

1200 kg Single Cage Passenger & Material Hoist



SC120TD

1200 kg Single Cage Passenger & Material Hoist



Note: Choose other types of Tie-in(wall brackets) based on their distance from the building.

SC120TD

1200 kg Single Cage Passenger & Material Hoist

CAPACITY	Cage number	<i>Single</i>	
	Cage payload	1200	kg
	Lifting speed	36	m/min
	Max height	150	m
	Erect payload	1000	kg
ELECTRICAL DATA	Motor (ZHANGJIANG or XMT)	2 × 11	kW
	Gear box type	<i>Chinese</i>	
	Inverter type	—	
	Inverter power	—	kW
	Gear box ratio	16	
	Rated motor current	47	A
	Power supply fuses	100	A
	Power supply capacity	33	kVA
	Power voltage stabilizer	<i>Optional/No</i>	
	DIMENSIONS WEIGHT	Cage nominal size(<i>L × W × H</i>)	3.2 × 1.5 × 2.5
Enclosure size(<i>L × W × H</i>)		3.6 × 3.3 × 3.5	m
Cage weight		1200	kg
Drive mechanism weight		600	kg
Mast size (<i>L × W × H</i>)		650 × 650 × 1508	mm
Mast number (single rack)		100	sets
Thickness,weight, quantity			
φ76 × 4.5		125kg	100 sets
Enclosure weight		1400	kg
Total weight		17270	kg
TIE IN	Tie-in type	<i>Type I</i>	
	Tie-in number	16	sets
	Attached distances L	2900 ~ 3600	mm
	The length between tie-in	≤ 9	m
	Mast overHand length	≤ 7.5	m
SAFETY FUNCTION	Overload alarm and display	<i>YES</i>	
	Safety device type	SAJ30-1.2	
	Safety device tripper speed	0.95	m/s
HOIST CONTROLS	Controls	<i>Frequency/PLC</i>	
	Roof electric small crane	<i>Standard, included</i>	
	Drop test controls	<i>Standard, included</i>	
	Programmable landings	<i>Optional/No</i>	
	Hoist calling system	<i>Optional/No</i>	
GENERAL	Cage/enclosure	<i>Steelplate/steelmesh</i>	
	Ground enclosure	<i>Standard, included</i>	
	Cable trolley system	<i>Standard, included</i>	
	Norms regulations	<i>Machine(EN12159 + A1)</i>	
	Move cable 3 × 16mm ²	162	m