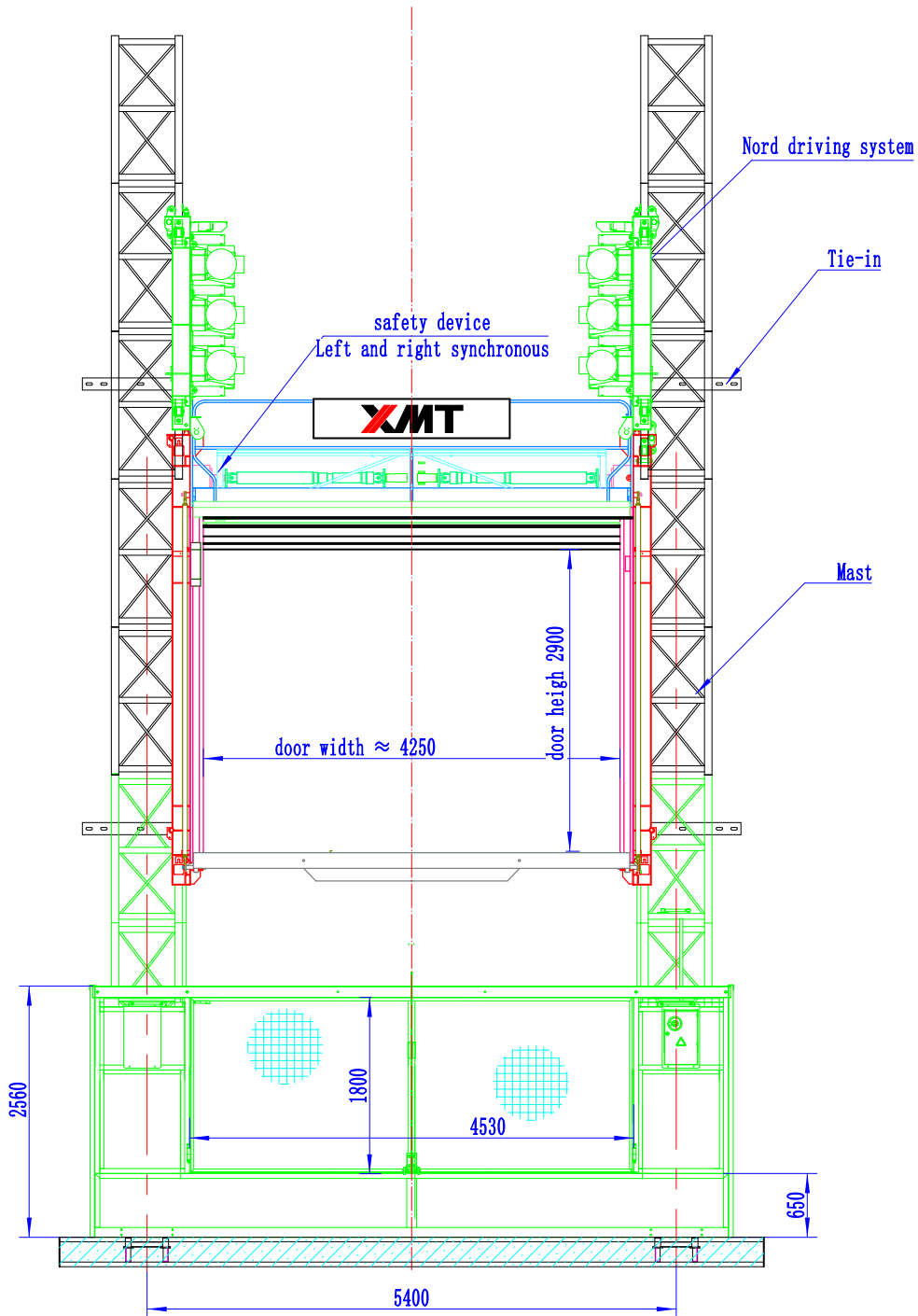


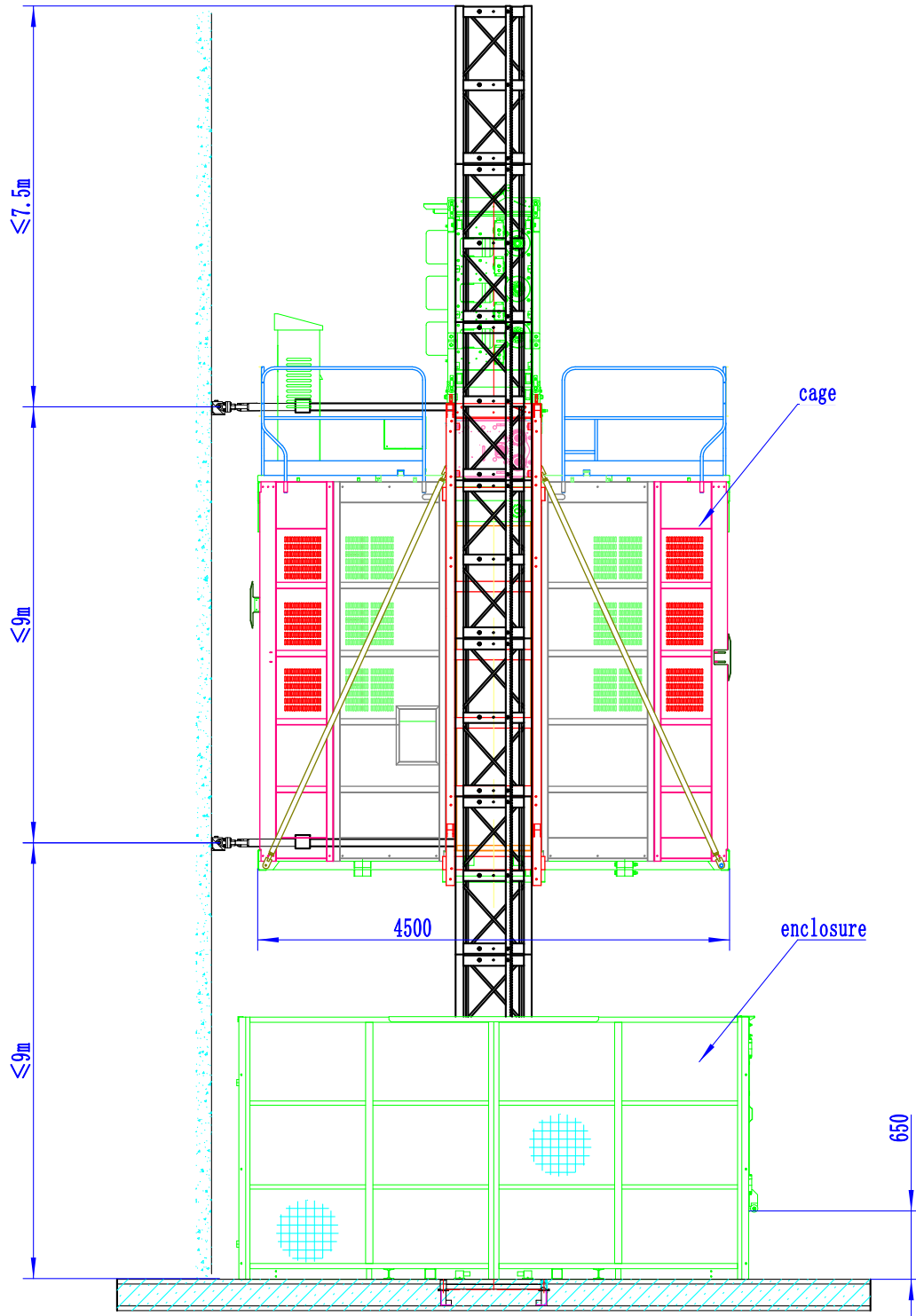
SCE500

5000 kg Double Mast Passenger & Material Hoist



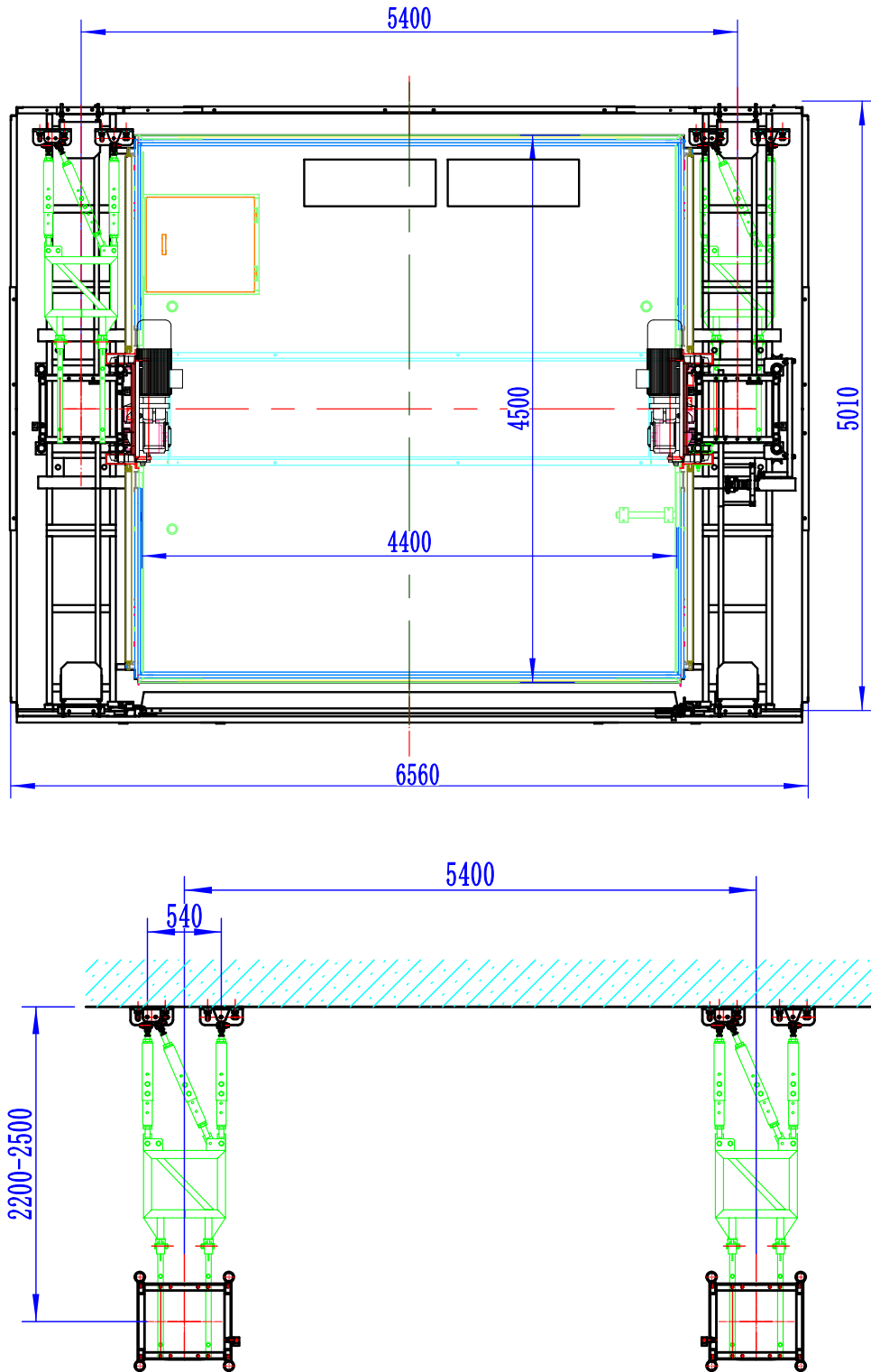
SCE500

5000 kg Double Mast Passenger & Material Hoist



SCE500

5000 kg Double Mast Passenger & Material Hoist



SCE500

5000 kg Double Mast Passenger & Material Hoist

CAPACITY	Cage number	<i>Single</i>		
	Cage payload	5000	kg	
	Lifting speed	0 ~ 40	m/min	
	Max height	600	m	
	Erect payload	2000	kg	
ELECTRICAL DATA	Motor(NORD)	2 × 3 × 11/ △ 19	kW	
	Gear box type	<i>NORD SK9042</i>		
	Inverter type	<i>Siemens</i>		
	Inverter power	2 × 75	kW	
	Gear box ratio	23.89		
	Rated motor current	195.6	A	
	Power supply fuses	250	A	
	Power supply capacity	166	kVA	
	Power voltage stabilizer	<i>Optional/No</i>		
	DIMENSIONS WEIGHT	Cage nominal size(<i>L × W × H</i>)	4.5 × 4.4 × 3.40	m
Enclosure size(<i>L × W × H</i>)		5 × 6.6 × 2.6	m	
Cage weight		4200	kg	
Drive mechanism weight		2 × 1400	kg	
Mast size (<i>L × W × H</i>)		650 × 650 × 1508	mm	
Mast number (Single rack)		2 × 398	sets	
Thickness,weight, quantity				
φ76 × 4.5		125kg	2 × 186sets	
φ76 × 6.0		145kg	2 × 160sets	
φ76 × 8.0		165kg	2 × 160sets	
φ76 × 10		185kg	2 × 80sets	
φ76 × 12		215kg	2 × 65sets	
Enclosure weight		1800	kg	
Total weight		115855	kg	
TIE IN		Tie-in type	<i>Type Va</i>	
		Tie-in number	2 × 66	sets
		Attached distances L	2200 ~ 2500	mm
		The length between tie-in	≤ 9	m
		Mast overHand length	≤ 7.5	m
SAFETY FUNCTION	Overload alarm and display	<i>YES</i>		
	Safety device type	<i>spec SAJ65 – 2.0</i>		
	Safety device tripper speed	1.95	m/s	
HOIST CONTROLS	Controls	<i>Frequency/PLC</i>		
	Roof electric small crane	<i>Standard, included</i>		
	Drop test controls	<i>Standard, included</i>		
	Programmable landings	<i>Optional/No</i>		
	Hoist calling system	<i>Optional/No</i>		
	GENERAL	Cage/enclosure	<i>Steelplate/steelmesh</i>	
Ground enclosure		<i>Standard, included</i>		
Cable trolley system		<i>Standard, included</i>		
Norms regulations		<i>Machine(EN12159 + A1)</i>		
Move cable 3 × 25mm ²		307	m	
Fixed cable 3 × 50mm ²		315	m	